



CRISP

CRISP Consent Tool

Patient Consent to Share SUD/MH Data

Leyla Falahi-Sell

Naureen Elahi

June 2023

7160 Columbia Gateway Drive, Suite 100
Columbia, MD 21046
877.952.7477 | info@crisphealth.org
www.crisphealth.org



Agenda

- ❖ Overview of CRISP Consent Tool
- ❖ Accessing Consent Tool
- ❖ Consent Tool Features
- ❖ Live Demo
 - ❖ SUD/MH Patient Consent Form and Consent Options
 - ❖ SUD/MH data available
- ❖ Discussion/Questions





Consent Tool Overview

CRISP Consent Tool

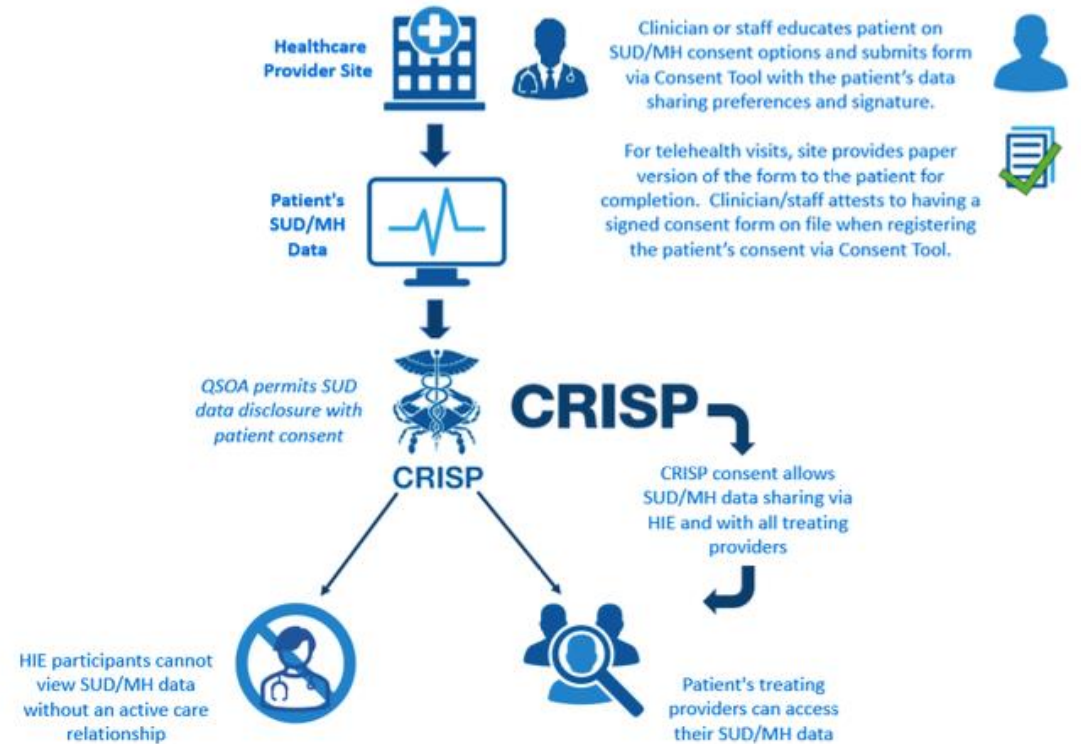
Enables Substance Use Disorder (SUD) and Mental Health (MH) providers to share data protected by 42 CFR Part 2 through the HIE upon patient consent.



Purpose

- ✓ Improve care coordination between SUD/MH providers and other health care providers
- ✓ Strengthen continuity of care for patients throughout SUD/MH treatment levels
- ✓ Ease workflow burden when obtaining consent and disclosing information

SUD Data Flow Across the HIE:



SUD/MH care team and treating providers can access consent history, contact information, clinical data, and claims information according to patient preference and data availability

Please note: Consent to share SUD/MH information can be updated or revoked at any time



Consent Tool Overview

WHO HAS ACCESS TO THE CRISP CONSENT TOOL?

CRISP Users in these Types of Organizations

Accountable Care Organization
Ambulatory

Care Coordinator/Management
Care Transformation Organization

Clinically Integrated Network

First Responder

Hospital

Long Term/Post Acute

Urgent Care



WHO HAS ACCESS TO VIEW THE DATA?

Upon Patient's Consent



CRISP will share available SUD/MH data
with treatment providers
on the patient's health care team

...who participate with CRISP Shared Services
affiliate Health Information Exchanges (HIEs)



Consent Tool Overview

WHAT INFORMATION WILL BE SHARED?



Patients have the option
to select the
AMOUNT and **KIND** of information
to be disclosed



- Behavioral Health provider's CONTACT INFO only
OR
 - ALL SUD and MH data which can include:
treatment plan, medications, lab results, clinical notes, claims data, etc.

NOTE: All SUD/MH data displayed in CRISP will be accompanied by a notice that such information may not be redisclosed per Part 2 requirements. Patient consent to share SUD or MH information may be updated or revoked at any time.



Accessing Consent Tool

CRISP HIE Portal

CRISP All Rights Reserved.

HOME

This query portal is for authorized use only. By using this system, all users acknowledge notice of, and agree to comply with the following procedure. CRISP uses a privacy monitoring tool to ensure all users are adherent to an approved policy or use case. By clicking on the links below, you are acknowledging that you have read and understand the terms and conditions of use.

CRISP

Connecting Providers with Technology to Improve Patient Care

PRODUCT UPDATES | NAUREEN ELAHI | LOGOUT

Select App

- Clinical Information
- InContext
- MyDirectives for Clinicians
- Snapshot Staging
- AK Labs and Imaging
- CareTeam
- Clinical Information Staging
- Consent Tool**
- COVID Lab Tools
- MOM Care Plan

Applications & Reports

Search Results

First Name | Last Name

GILBERT | GRAPE

Match Score

117 - probable

Reset | Search

HIE InContext

Female | Nov 16, 1981

HEALTH RECORDS | ENCOUNTERS | PROBLEMS | STRUCTURED DOCUMENTS | IMMUNIZATIONS

ALL | LABORATORY | RADIOLOGY | CLINICAL NOTES

Health Records

Hide Home Facility Data

Date Collected	Source	Description
2022-07-21	CRISP_REFER	Referral for further care
2022-07-05	CRISP_REFER	Referral for further care
	CRISP_REFER	Referral for further care
	CRISP_REFER	Referral for further care
	CRISP_REFER	Referral for further care
2022-05-17	CRISP_REFER	Referral for further care

Consent Tool allows treating providers and their staff to register a patient's affirmative consent to share data protected by 42 CFR Part 2 and, as applicable, other legally protected data. Click here to access in a new tab.

PATIENT INFORMATION

CLINICAL DATA

MEDICATION MANAGEMENT

CARE COORDINATION

SOCIAL NEEDS DATA

DATA FROM CLAIMS

CONSENT TOOL

PDMP

EMR Single Sign-On (SSO)





Consent Tool Features

Consent Tool Features Include:

- ✓ Electronic signatures for patient consent
- ✓ Flexible expiration dates for consent registration
- ✓ Ability to select kind and amount of SUD/MH data to share
- ✓ Ability for providers to capture consent on the paper version of the tool and then register consent preferences via the tool online
- ✓ Easy integration with existing administrative workflows
- ✓ Ability to deactivate/revoke consent at any time - CRISP will immediately stop sharing SUD/MH data
- ✓ View and print previously registered consents
- ✓ Links to Accounting of Disclosures – tracking anyone accessing SUD/MH data





CRISP

Live Demo



Interested in Using Consent Tool?

REQUEST A DEMO!

Contact Naureen Elahi
naureen.elahi@crisphealth.org

Organizations already onboarded to CRISP:

- Ask your HIE admin to provision Consent Tool access for you

If you do not know who your HIE admin is, please reach out to Naureen.elahi@crisphealth.org

Organizations who have not yet onboarded to CRISP:

- Complete the onboarding process – Timeline: 2-3 weeks

Point of contact for onboarding: Naureen Elahi, Naureen.elahi@crisphealth.org

FOR MORE INFORMATION VISIT: <https://www.crisphealth.org/consent-%20tool/>



CRISP

Discussion/Questions?

Leyla Falahi-Sell

leyla.falahi@crisphealth.org

Naureen Elahi

Naureen.Elahi@crisphealth.org



Appendix



About CRISP

CRISP is a Regional Health Information Exchange (HIE) serving Maryland, the District of Columbia, West Virginia, Connecticut, Alaska and Virginia.

Vision: To advance health and wellness by deploying health information technology solutions adopted through cooperation and collaboration



Guiding Principles

- Begin with a manageable scope and remain incremental.
- Create opportunities to cooperate even while participating healthcare organizations still compete in other ways.
- Affirm that competition and market-mechanisms spur innovation and improvement.
- Promote and enable consumers' control over their own health information.
- Use best practices and standards.
- Serve our region's entire healthcare community.



Core CRISP Services

- 1. POINT OF CARE: PDMP, Clinical Information (Patient Snapshot, Health Records, Imaging, Claims data, Embedded Apps)**
 - Search for your patients' prior hospital records (e.g., labs, radiology reports, etc.)
 - Monitor the prescribing and dispensing of PDMP drugs
 - Determine other members of your patient's care team
- 2. CARE COORDINATION: Encounter Notification Service (ENS)**
 - Be notified when your patient is hospitalized or discharged from any regional hospital
 - Receive special notification about ED visits that are potential readmissions
 - Know when your MCO member is in the ED
- 3. POPULATION HEALTH: CRISP Reporting Services (CRS)**
 - Use Case Mix data and Medicare claims data to:
 - ✓ Identify patients who could benefit from services
 - ✓ Measure performance of initiatives for QI and program reporting
 - ✓ Coordinate with peers on behalf of patients who see multiple providers
- 4. PUBLIC HEALTH SUPPORT:** Partnerships with Maryland MDH, District of Columbia DHCF, and West Virginia through the WVHIN
- 5. PROGRAM ADMINISTRATION:** Technical and administrative support for Care Redesign Programs